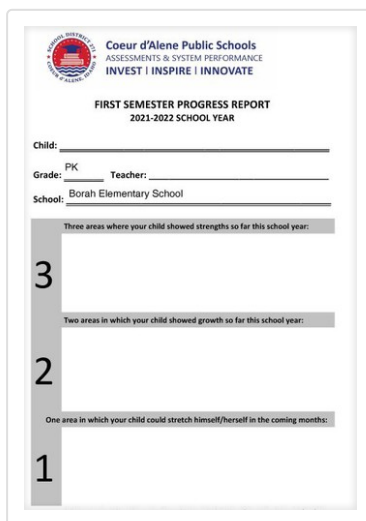


Talkin' Testing

Assessment & System Performance | November 2021



HONORING OUR SCHOOL DISTRICT'S VETERANS
- THANK YOU FOR CONTINUING TO SERVE OTHERS -



Coeur d'Alene Public Schools
ASSESSMENTS & SYSTEM PERFORMANCE
INVEST | INSPIRE | INNOVATE

FIRST SEMESTER PROGRESS REPORT
2021-2022 SCHOOL YEAR

Child: _____
Grade: PK Teacher: _____
School: Borah Elementary School

Three areas where your child showed strengths so far this school year:

3

Two areas in which your child showed growth so far this school year:

2

One area in which your child could stretch himself/herself in the coming months:

1

Major Look: Elementary Progress Report Posted

Our first elementary progress reports will be provided soon and our district has posted the preferred template on MyCDASchools > Assessments > [Standards-based Grading](#). This template allows teachers to enter findings on the left-hand side of the document and watch it automatically copied to the right-side so that it can be printed and half provided to the parent/guardian and one for the permanent cumulative record.

No "Drill" Sargeants: Utilize Student Self-Assessment

So, what's your best memory about testing? Most likely you don't have anything that comes to mind. You're probably very thankful that we have another full month before our next diagnostic windows open in January. :)



This is, however, the perfect time to reframe assessment practices where students are involved in a greater way in evaluating their own work and learning progress. This is not only a

valuable learning tool within the assessment process but one that invites varied feedback on how a student is progressing.

As our [Instructional Framework](#) demonstrates, when paired with conferring and peer-assessment practices, students employing self-assessment can:

- identify their own skill gaps, where their knowledge is current weak and can be improved;
- see where to focus their attention in learning;
- create a portfolio of talents and abilities;
- set realistic goals;
- revise their work;
- track their own progress;
- if online, decide when to move to the next level of the course; and
- stay involved and motivated, encouraging self-reflection and responsibility for their learning.

WINTER ASSESSMENT WINDOW: January 3-31, 2022



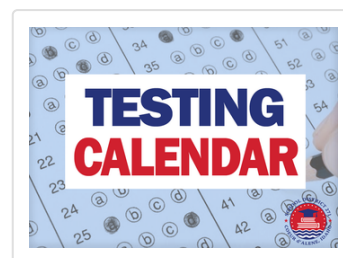
Assessment Bill of Rights

We believe that assessment, when properly applied, serves as one of the most powerful tools at a teacher's disposal. This [Bill of Rights](#) will be included in all assessment presentations and parent communications.



Comprehensive Assessment Plan

Our Board-approved [Comprehensive Assessment Plan](#) outlines our current and future goals around testing and how we will use these results to inform individualization and instructional decisions.



Testing Calendar

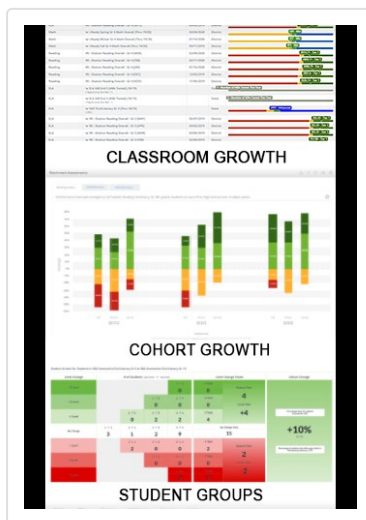
A living testing calendar can be found at MyCDASchools > [Assessments](#), on the district website at > www.cdaschools.org > Departments > [Assessments](#) or on Schoology by clicking the [calendar icon](#) in the upper-right corner of any page.

Marching Toward May: ISATs Will Be Shortened Again/Remote Allowed

The Idaho State Department of Education has elected to administer the ELA/Literacy and Math summative ISATs according to the adjusted blueprint for spring 2022. The spring 2022 Adjusted Blueprint is the same as the 2021 blueprints ([ELA/literacy](#) and [mathematics](#)) and reflected shorter testing times last year. That does, however, limit the access of some data elements, such as claim scores for each component, such as reading, geometry, or writing.

The spring 2022 ELA/Literacy and math summative assessments will still consist of a computer adaptive test (CAT) and a performance task (PT). Claim level scores will only be available for rosters of students. Additionally, the spring 2022 science ISATs will be operational field tests in grades 05/08 and 11. The science blueprints for [elementary school](#), [middle school](#), and [high school](#) are available on the Idaho Portal.

Our state department will also again allow remote assessments this spring as needed.



Don't Let them "Bomb" - Good Data Is Your Best Defense

[Homeroom is our district's secure, personalized data portal](#)

that combines all available student data into attractive, easy-to-use charts and powerful tools. Teachers, administrators and support staff can click on the "HR" link on the front page of [My CDA Schools](#) and login with your normal email address or username and district password to see:




- Student Spotlights - a dedicated page for each student encompassing valuable data in single view...
- Assessments - allows viewing of single assessments, assessment sets, disaggregation and item analysis...
- Student Groups - generating student groups based on enrollment information such as school years, grade levels, classes, and activities...
- Risk Indicators - displays and calculates indicators related to risk...
- Student Learning/Intervention Plans - allows for MTSS members, SLPs, and other staff to create a shared and focused learning plan which can be mass assigned and mass printed...
- Data Extracts - over twenty-five types of extracts, each built for a specific data visualization need.

Certificated staff will also complete staff evaluations through Homeroom this year.

For assistance and support, please reach out to Mike Nelson (msnelson@cdaschools.org) or use their interactive [Help Center](#).

Basic Training: Grading Descriptors for Elementary Report Card

What does "emerging" really mean? How do we know when students are "approaching" a standard? Does this assignment really show that a student is "proficient?" The graphic below will appear in both an upcoming teacher handbook and parent guide for our standards-based report cards in January.

GRADING DESCRIPTORS - 2021-2022		
EMERGING	APPROACHING	PROFICIENT
		
<p>Student demonstrates a few elements of the standard;</p> <p>Student needs extensive prompting, scaffolding, or support;</p> <p>Student may need to seek additional supports from the teacher/school.</p>	<p>Student demonstrates some elements of the standard;</p> <p>Student may need some prompting, scaffolding, or support but generally connects with the standard;</p> <p>Errors and/or mistakes impede demonstration of the standard.</p>	<p>Student demonstrates consistent, deep, and precise understanding of the standard;</p> <p>Student makes few errors or mistakes do not impede demonstration of meeting the standard.</p>
STANDARD NOT YET MET		STANDARD MET

Ready for Take Off?: TA Certification Course and Practice with ISAT Interim Assessments

Although the start of the ISAT window is still over five months away, you may not be looking forward to the spring ISAT. However, there are many powerful ["Tools for Teachers,"](#) in your Idaho Portal account and the interim assessments are one of the best ways to prepare for the ELA/math and science tests. Now is the time to consider taking the [TA Certification Course](#) in order to begin an [interim assessment](#) or access many of these resources.



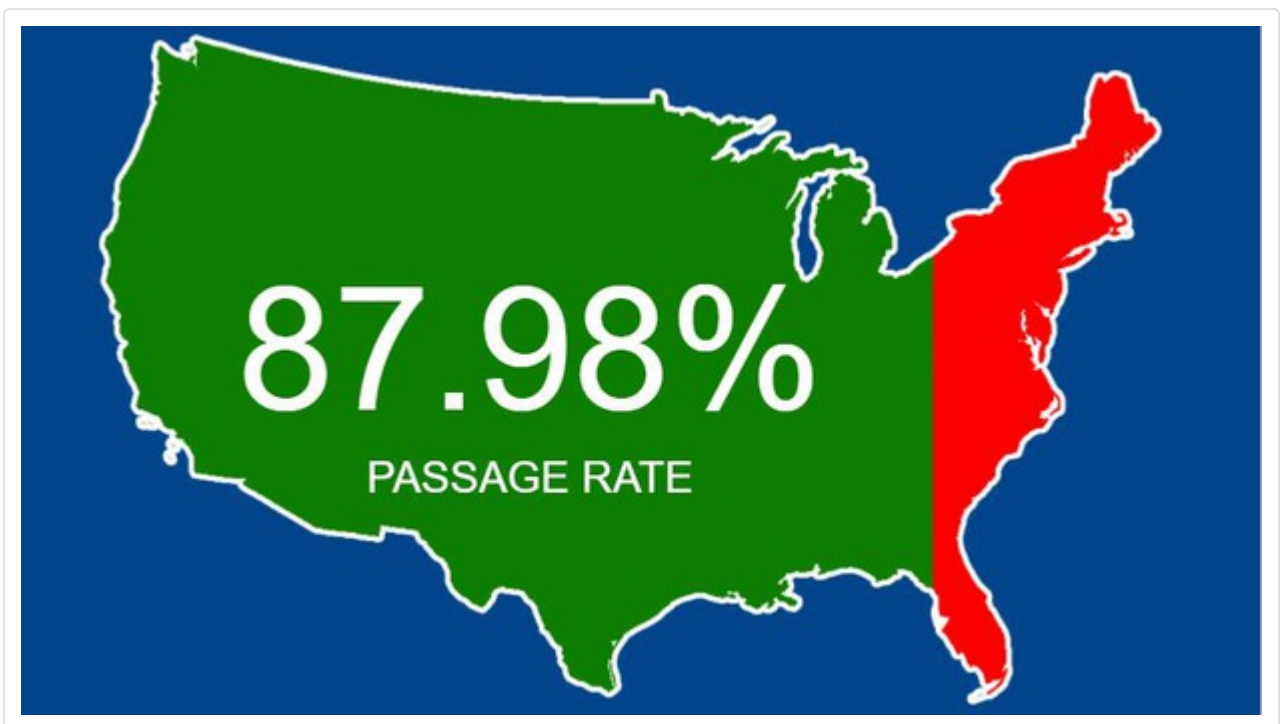
See the Interim Assessment Implementation & Planning Checklist on the [Idaho Portal](#) for a list of steps to take to administer interims. **Interim assessments are available through February 25, 2022.**

If you're "a seasoned veteran" and have had access to the Idaho Portal before, please note that your password is reset annually. You will need to click on "forgot password" and follow the prompts to establish access for this year. If you are new to the ISAT, your school test manager will need to establish your account. For assistance and support, please reach out to Mike Nelson (msnelson@cdaschools.org) or use their interactive [Help Center](#).



U-S-A!: Civics Window Passage Rate

233 students took our district's version of the civics assessment in order to meet a graduation requirement. The passage rate for the first of four windows is shown below. Students in grades 07-12 can take/re-take the assessment again in December.



"All That They Can Be" - It's Career Development Month

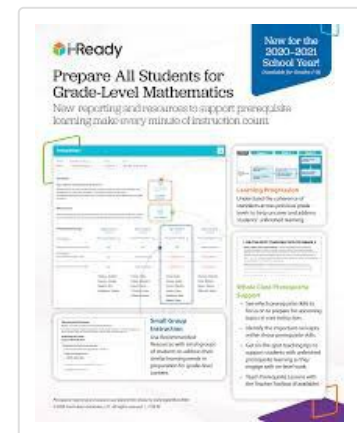
As we know, being future-ready for students isn't just about applying for college. It's an ongoing process that educators should engage students in throughout their entire academic journey, so that each activity, lesson, and lived experience brings students closer to a meaningful post-secondary pathway...whether students plan to immediately enter the

workforce, join the military, or advance to a post-secondary institution.

Using [Xello](#), our secondary students explore their future options, develop a four-year plan, apply to colleges and universities and develop their own future-readiness skills. Our college and career coordinators at our middle and high schools guide students [through lessons](#) and educators can see progress for each student as well as useful inventories through that platform.

Battle Plan: Powerful i-Ready Prerequisites Report

A new i-Ready (grades KG-05) [Prerequisites \(Class\) report](#) uses the results of your student's last Diagnostic and helps you use that data to make instructional decisions about upcoming grade-level mathematics content. It's perfect for understanding students' learning needs in relation to upcoming grade-level mathematics content and informing your unit/lesson planning by identifying essential prerequisite skills, potential student groups, supports for whole-class instruction and recommended resources to be used during classroom instruction.



The report can be found in i-Ready > Reports > Class > Prerequisites.

Reading Comprehension <i>recesses</i>	%Declining @	Tier 2
<i>Click on tier to view mastery goals and expectations</i>		
Standards relating to this skill		View History Take Action
RC.1.1	RC.1.2	RC.1.3
RC.1.4	RC.1.5	RC.1.6
RC.2.1	RC.2.2	RC.2.3
RC.2.4	RC.2.5	RC.2.6
RC.3.1	RC.3.2	RC.3.3
RC.3.4	RC.3.5	RC.3.6
RC.4.1	RC.4.2	RC.4.3
RC.4.4	RC.4.5	RC.4.6
RC.5.1	RC.5.2	RC.5.3
RC.5.4	RC.5.5	RC.5.6
RC.6.1	RC.6.2	RC.6.3
RC.6.4	RC.6.5	RC.6.6
RC.7.1	RC.7.2	RC.7.3
RC.7.4	RC.7.5	RC.7.6
RC.8.1	RC.8.2	RC.8.3
RC.8.4	RC.8.5	RC.8.6
RC.9.1	RC.9.2	RC.9.3
RC.9.4	RC.9.5	RC.9.6
RC.10.1	RC.10.2	RC.10.3
RC.10.4	RC.10.5	RC.10.6
RC.11.1	RC.11.2	RC.11.3
RC.11.4	RC.11.5	RC.11.6
RC.12.1	RC.12.2	RC.12.3
RC.12.4	RC.12.5	RC.12.6
RC.13.1	RC.13.2	RC.13.3
RC.13.4	RC.13.5	RC.13.6
RC.14.1	RC.14.2	RC.14.3
RC.14.4	RC.14.5	RC.14.6
RC.15.1	RC.15.2	RC.15.3
RC.15.4	RC.15.5	RC.15.6
RC.16.1	RC.16.2	RC.16.3
RC.16.4	RC.16.5	RC.16.6
RC.17.1	RC.17.2	RC.17.3
RC.17.4	RC.17.5	RC.17.6
RC.18.1	RC.18.2	RC.18.3
RC.18.4	RC.18.5	RC.18.6
RC.19.1	RC.19.2	RC.19.3
RC.19.4	RC.19.5	RC.19.6
RC.20.1	RC.20.2	RC.20.3
RC.20.4	RC.20.5	RC.20.6
RC.21.1	RC.21.2	RC.21.3
RC.21.4	RC.21.5	RC.21.6
RC.22.1	RC.22.2	RC.22.3
RC.22.4	RC.22.5	RC.22.6
RC.23.1	RC.23.2	RC.23.3
RC.23.4	RC.23.5	RC.23.6
RC.24.1	RC.24.2	RC.24.3
RC.24.4	RC.24.5	RC.24.6
RC.25.1	RC.25.2	RC.25.3
RC.25.4	RC.25.5	RC.25.6
RC.26.1	RC.26.2	RC.26.3
RC.26.4	RC.26.5	RC.26.6
RC.27.1	RC.27.2	RC.27.3
RC.27.4	RC.27.5	RC.27.6
RC.28.1	RC.28.2	RC.28.3
RC.28.4	RC.28.5	RC.28.6
RC.29.1	RC.29.2	RC.29.3
RC.29.4	RC.29.5	RC.29.6
RC.30.1	RC.30.2	RC.30.3
RC.30.4	RC.30.5	RC.30.6
RC.31.1	RC.31.2	RC.31.3
RC.31.4	RC.31.5	RC.31.6
RC.32.1	RC.32.2	RC.32.3
RC.32.4	RC.32.5	RC.32.6
RC.33.1	RC.33.2	RC.33.3
RC.33.4	RC.33.5	RC.33.6
RC.34.1	RC.34.2	RC.34.3
RC.34.4	RC.34.5	RC.34.6
RC.35.1	RC.35.2	RC.35.3
RC.35.4	RC.35.5	RC.35.6
RC.36.1	RC.36.2	RC.36.3
RC.36.4	RC.36.5	RC.36.6
RC.37.1	RC.37.2	RC.37.3
RC.37.4	RC.37.5	RC.37.6
RC.38.1	RC.38.2	RC.38.3
RC.38.4	RC.38.5	RC.38.6
RC.39.1	RC.39.2	RC.39.3
RC.39.4	RC.39.5	RC.39.6
RC.40.1	RC.40.2	RC.40.3
RC.40.4	RC.40.5	RC.40.6
RC.41.1	RC.41.2	RC.41.3
RC.41.4	RC.41.5	RC.41.6
RC.42.1	RC.42.2	RC.42.3
RC.42.4	RC.42.5	RC.42.6
RC.43.1	RC.43.2	RC.43.3
RC.43.4	RC.43.5	RC.43.6
RC.44.1	RC.44.2	RC.44.3
RC.44.4	RC.44.5	RC.44.6
RC.45.1	RC.45.2	RC.45.3
RC.45.4	RC.45.5	RC.45.6
RC.46.1	RC.46.2	RC.46.3
RC.46.4	RC.46.5	RC.46.6
RC.47.1	RC.47.2	RC.47.3
RC.47.4	RC.47.5	RC.47.6
RC.48.1	RC.48.2	RC.48.3
RC.48.4	RC.48.5	RC.48.6
RC.49.1	RC.49.2	RC.49.3
RC.49.4	RC.49.5	RC.49.6
RC.50.1	RC.50.2	RC.50.3
RC.50.4	RC.50.5	RC.50.6
RC.51.1	RC.51.2	RC.51.3
RC.51.4	RC.51.5	RC.51.6
RC.52.1	RC.52.2	RC.52.3
RC.52.4	RC.52.5	RC.52.6
RC.53.1	RC.53.2	RC.53.3
RC.53.4	RC.53.5	RC.53.6
RC.54.1	RC.54.2	RC.54.3
RC.54.4	RC.54.5	RC.54.6
RC.55.1	RC.55.2	RC.55.3
RC.55.4	RC.55.5	RC.55.6
RC.56.1	RC.56.2	RC.56.3
RC.56.4	RC.56.5	RC.56.6
RC.57.1	RC.57.2	RC.57.3
RC.57.4	RC.57.5	RC.57.6
RC.58.1	RC.58.2	RC.58.3
RC.58.4	RC.58.5	RC.58.6
RC.59.1	RC.59.2	RC.59.3
RC.59.4	RC.59.5	RC.59.6
RC.60.1	RC.60.2	RC.60.3
RC.60.4	RC.60.5	RC.60.6
RC.61.1	RC.61.2	RC.61.3
RC.61.4	RC.61.5	RC.61.6
RC.62.1	RC.62.2	RC.62.3
RC.62.4	RC.62.5	RC.62.6
RC.63.1	RC.63.2	RC.63.3
RC.63.4	RC.63.5	RC.63.6
RC.64.1	RC.64.2	RC.64.3
RC.64.4	RC.64.5	RC.64.6
RC.65.1	RC.65.2	RC.65.3
RC.65.4	RC.65.5	RC.65.6
RC.66.1	RC.66.2	RC.66.3
RC.66.4	RC.66.5	RC.66.6
RC.67.1	RC.67.2	RC.67.3
RC.67.4	RC.67.5	RC.67.6
RC.68.1	RC.68.2	RC.68.3
RC.68.4	RC.68.5	RC.68.6
RC.69.1	RC.69.2	RC.69.3
RC.69.4	RC.69.5	RC.69.6
RC.70.1	RC.70.2	RC.70.3
RC.70.4	RC.70.5	RC.70.6
RC.71.1	RC.71.2	RC.71.3
RC.71.4	RC.71.5	RC.71.6
RC.72.1	RC.72.2	RC.72.3
RC.72.4	RC.72.5	RC.72.6
RC.73.1	RC.73.2	RC.73.3
RC.73.4	RC.73.5	RC.73.6
RC.74.1	RC.74.2	RC.74.3
RC.74.4	RC.74.5	RC.74.6
RC.75.1	RC.75.2	RC.75.3
RC.75.4	RC.75.5	RC.75.6
RC.76.1	RC.76.2	RC.76.3
RC.76.4	RC.76.5	RC.76.6
RC.77.1	RC.77.2	RC.77.3
RC.77.4	RC.77.5	RC.77.6
RC.78.1	RC.78.2	RC.78.3
RC.78.4	RC.78.5	RC.78.6
RC.79.1	RC.79.2	RC.79.3
RC.79.4	RC.79.5	RC.79.6
RC.80.1	RC.80.2	RC.80.3
RC.80.4	RC.80.5	RC.80.6
RC.81.1	RC.81.2	RC.81.3
RC.81.4	RC.81.5	RC.81.6
RC.82.1	RC.82.2	RC.82.3
RC.82.4	RC.82.5	RC.82.6
RC.83.1	RC.83.2	RC.83.3
RC.83.4	RC.83.5	RC.83.6
RC.84.1	RC.84.2	RC.84.3
RC.84.4	RC.84.5	RC.84.6
RC.85.1	RC.85.2	RC.85.3
RC.85.4	RC.85.5	RC.85.6
RC.86.1	RC.86.2	RC.86.3
RC.86.4	RC.86.5	RC.86.6
RC.87.1	RC.87.2	RC.87.3
RC.87.4	RC.87.5	RC.87.6
RC.88.1	RC.88.2	RC.88.3
RC.88.4	RC.88.5	RC.88.6
RC.89.1	RC.89.2	RC.89.3
RC.89.4	RC.89.5	RC.89.6
RC.90.1	RC.90.2	RC.90.3
RC.90.4	RC.90.5	RC.90.6
RC.91.1	RC.91.2	RC.91.3
RC.91.4	RC.91.5	RC.91.6
RC.92.1	RC.92.2	RC.92.3
RC.92.4	RC.92.5	RC.92.6
RC.93.1	RC.93.2	RC.93.3
RC.93.4	RC.93.5	RC.93.6
RC.94.1	RC.94.2	RC.94.3
RC.94.4	RC.94.5	RC.94.6
RC.95.1	RC.95.2	RC.95.3
RC.95.4	RC.95.5	RC.95.6
RC.96.1	RC.96.2	RC.96.3
RC.96.4	RC.96.5	RC.96.6
RC.97.1	RC.97.2	RC.97.3
RC.97.4	RC.97.5	RC.97.6
RC.98.1	RC.98.2	RC.98.3
RC.98.4	RC.98.5	RC.98.6
RC.99.1	RC.99.2	RC.99.3
RC.99.4	RC.99.5	RC.99.6
RC.100.1	RC.100.2	RC.100.3
RC.100.4	RC.100.5	RC.100.6

Honorably Discharge the IStation Standards Report for Personalization

IStation has multiple reports which show student progress toward meeting end-of-year goals. But, which specific standards have students mastered? When you're designing lessons that address specific standards, you can use the Standards Report to see each student and the specific targets in each of the domains in reading. This report groups the standards that relate to each skill and provides actionable steps to help improve. Plus, the report also provides students a trend for each domain to answer questions such as "Am I getting better in reading comprehension?"

Consider adding the standards report when you begin a new unit, address specific standards, and review data with students. You'll find it at IStation > Report > Standards Report.



Contact Us

@cdaguyinbowtie

Our team is very willing to support you at any time. Reach out as you may need support.

1400 North Northwood Center ...

msnelson@cdascschools.org

10006

my.cdaschools.org

